

PVC Ceiling with PVC Cornice installation Instruction



CAPE COASTAL CEILINGS

Committed to Customer Satisfaction

Level 1 BEE Supplier



Step 1: Ensure that branding (38mmx38mm battens) are fixed onto main trusses approximately 400mm apart that it is lined up completely level.



Step 2: Make use of the right insulation for your room. This will make the room more comfortable for you as well as extend the lifespan of your ceiling.



Step 3: Mitre and screw PVC Cornices onto branding along the perimeter of the room/area. (Do not use nails or staples as these can pull loose where screws are more secure)



Step 4: Keeping in mind that the ceilings panels should run in the opposite direction of your branding. Slot the ceiling panel into the PVC Cornice tongue side first leaving the groove side exposed as you will need to screw through there into your branding to secure the panel (screw on every batten along the panel).



Step 5: Clip the second panel with the tongue into the groove of the first panel to conceal the screws. Knock the side of the panel slightly with the palm of your hand to secure close fitment then screw into the groove of the second panel to fix to the branding.



Step 6: Continue this process till the last panel fit into the cornice at the end of the room. Lastly, seal off all the corners and mitres with silicone and clean the ceiling with a damp cloth if needed.

Exquisite PVC Ceilings



Versatile to suit all needs, be it residential or commercial

Our PVC Ceiling and Cladding is so simple to install and maintain. At the same time it is a no mess, no fuss solution when it comes to renovation and the interlocking system makes it a breeze to install.

With the great versatility it brings, you are spoilt for choice as the variety of finishes are endless, not to mention the range of indoor applications.

Suitable for Bathrooms, Kitchens, Offices, Community Centres, Factories, Shopping Malls, Hospitals and so much more.

For more information on this product range and other related products, please feel free to give us a call or email us on the details listed below.

Unit 2, Gants Centre
Cnr, N2 & Fabriek Street, Somerset West, 7140

Tel : 021 854 7861/2
Email: info@capecoastalceilings.co.za

Features and Benefits

- Anti-Fungal
- Corrosion Resistant
- No Painting is Required
- Durable
- Easy to Clean
- Fire Retardant with a classification according to SANS 428 of Class B/B1/B2
- Light Weight
- Termite proof
- Water Proof
- Maintenance Free

FAQ's - Frequently Asked Questions

Where can the PVC Panels be installed?

Our PVC Panels can be installed in just about any indoor environment especially in high humidity areas such as bathrooms that are usually prone to mold.

Do I need to get in a Professional or can I do the installation myself?

As the panels are light weight it is relatively easy to install as a DIY product and with no mess or fuss as it doesn't need any screeding.

How do you cut the panels?

Our panels can easily be cut with a utility knife or a fine toothed saw to ensure a smooth cut.

Do I need to remove my existing ceiling to fit the PVC Ceiling panels?

No, Depending on the condition of your existing ceiling you could screw through the existing ceilings into the existing branding (Battons) underneath it.

However, if your existing ceilings are sagging, uneven or water damaged it would be best to remove it first before installing the PVC Ceilings.

How do I clean and maintain PVC panels?

You can use a damp cloth. Ceiling should be cleaned regularly, to prevent dust/dirt build up. Please refrain from using chlorinated or abrasive agents.

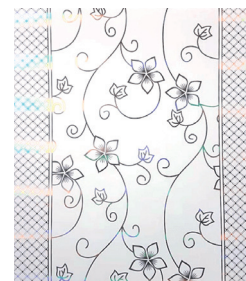
Available in a range of colours and Designs

You are spoilt for choice as the variety of finishes are endless, not to mention the range of indoor applications.

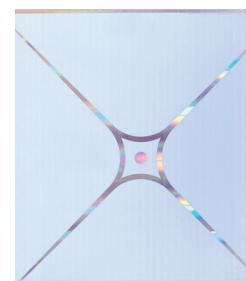
All Panels are 250mm wide and available in 3,9m length.



Code: 188



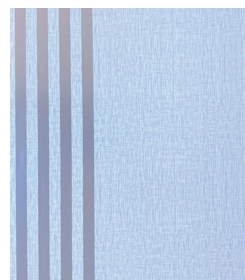
Code: 101



Code: 102



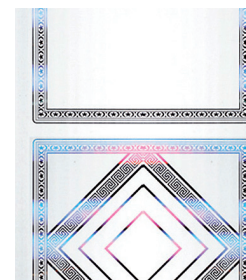
Code: 103



Code: 160



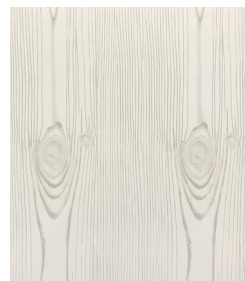
Code: 171



Code: 174



Code: 175



Code: 184



Code: 191



Code: 192



Code: 903